

Tekform Slimline Drawers

Tekform Titus⁺

Slimline Double Wall Drawers

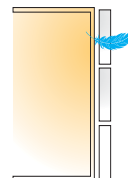
Lifelong Consistent Performance

For elegant design without compromising on performance, Tekform Slimline is the double wall drawer of choice.

- Narrow 14mm sides for a sleek look and increased drawer space
- No rails required for uniformity across all four heights
- Tuned performance with Titus proprietary adjustable damping
- Interchangeable with the Tekform DWD for a consistent drawer system
- User-friendly installation with less parts and EasyFix front connectors

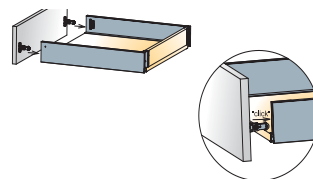
Titus Damper Inside

- Reliable damping and closing action at any door weight and any speed
- Fast closing and quiet landing
- Lifelong 'Confident Close' performance



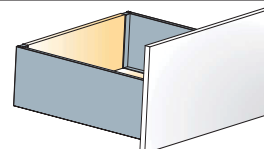
Intuitive installation

- Easy and quick assembly with less parts
- Repeatable assembly and disassembly possible
- EasyFix front panel connector for tool-free insertion and quarter-turn lock



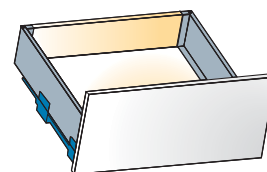
Expanded tolerances

- Precise drawer alignment
- Improved drawer stability in open position
- Smooth and silent operation



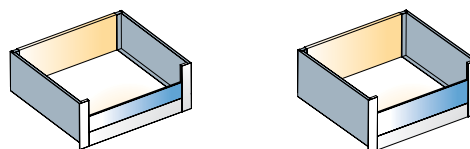
Elegant design with customisable flexibility

- Choose from white or anthracite drawer finishes and solid or glass sides
- Same drilling patterns as Tekform DWD for a truly homogeneous drawer platform



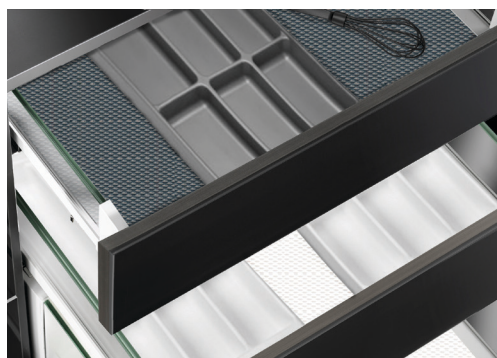
Glass front inner drawers

- Ideal for wardrobe applications
- Create consistency in your kitchen and maximise useable space by substituting pull-out pantry units with slimline inner drawers



Technical Details

Drawer runner type	Full extension
Load capacity	40kg
Minimum height space required	115mm
Wooden back panel thickness	16mm
Wooden bottom panel thickness	16mm
Side adjustment	+/- 1mm
Height adjustment	+/- 2mm
Drawer heights	70mm, 100mm 145mm, 182mm
Drawer lengths	270mm, 350mm, 400mm, 450mm, 500mm, 550mm
Finishes	White, anthracite grey
Front connectors	EasyFix, screw-in



- Optional modular cutlery tray organisation accessories
- Available with rigid non-slip drawer matt in white or anthracite
- Titus damper inside for consumer preferred 'Confident Close'

Slimline Glass SDWDG

8mm tempered glass sides

Interchangeable runner system with the **Tekform DWD** and **Tekform Slimline** drawers for a unified drawer system.

