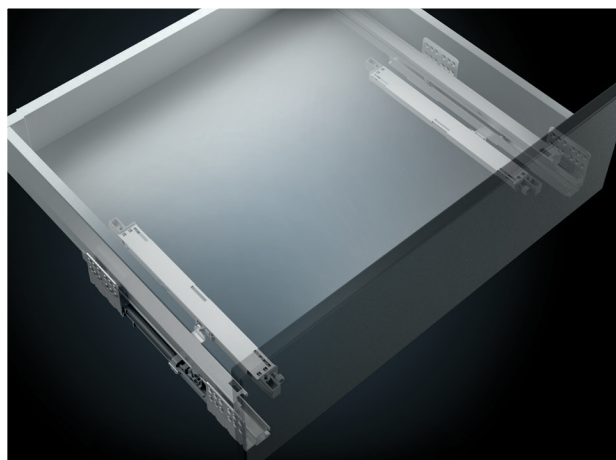




**1.5mm
OPERATING
GAP**

NEW Slimline SDWD-T

TOUCH OPENING



Push to Open Drawer Solution

The NEW Slimline SDWD-T is the latest push-to-open engineering innovation from Titus. The narrow operating gap ensures perfect drawer alignment and operation down to a minimum of 1.5mm with Titus proprietary damping technology.

Universal Mechanism

Designed to improve efficiency as well as drawer performance, the SDWD-T drawer uses a pre-mounted applicator and non-handed mechanism to shorten assembly time and make installation a breeze.